



Scan barcodes, automate warehouse transactions

 **BarCode**

For **Sage** 300

Cost effective solutions with instant time to
benefits for SMEs

BarCode

AutoSimply BarCode is a simple and cost-effective solution that makes use of web service technology and the Sage 300 SDK to provide real-time online posting of transactions from handheld computers or tablets in the warehouse.

Key features

P/O

O/E

I/C

M/F

S/C

GS1 / HIBC

Bin Tracking

Serialized Inventory and Lot Tracking

Inquiry

Purchase Order (P/O)

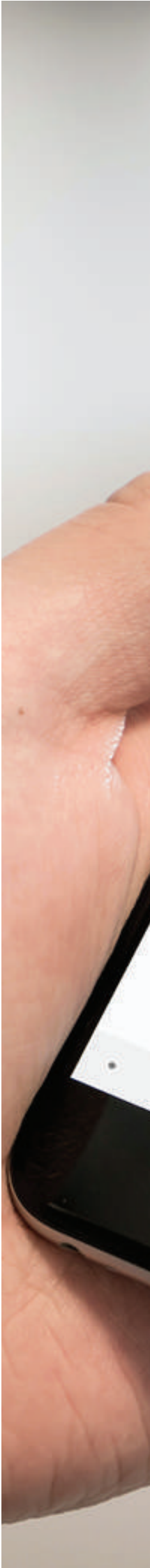
- Receipt based on a single purchase order, multiple purchase orders, or without a purchase order
- Goods Return

Order Entry (O/E)

- Shipment based on a single sales order, or multiple sales orders
- Return based on shipments and invoices

Inventory Control (I/C)

- Internal usage
- Transfer and transit transfer
- Stock count based on I/C Inventory Worksheets
- Receipt and return
- Shipment and return
- Assembly and disassembly





NO Training

Quick
implementation

GS1 barcode
standard

Accurate
inventory

Serialized Inventory and Lot Tracking

- All transactions (except stock count) support items with Lot and/or Serial numbers
- Auto generate Lot/Serial numbers upon goods receipt

Inquiry

- Item and stock level inquiry
- Lot and Serial number inquiry
- Pending receipt and shipment inquiry

Bin Tracking by Orchid Systems

AutoSimply BarCode supports Bin Tracking by Orchid Systems. Bin Tracking sub-divides a warehouse location in multiple bins which can include shelves, slots, pallets or drawers, which improves location tracking of items within a warehouse.

Industry barcode standards

AutoSimply Barcode supports industry barcode standards that allow for multiple information to be encoded in a single barcode. Efficiency of scanning items improves even further. With one scan, the program can capture all these information if they are in the barcode:

Product number

Batch number

Serial number

Expiry date

Quantity

GS1

Designed for global trading and distribution, it is common for businesses to receive and ship goods with GS1 barcodes, or produce products with GS1 labelling.

- Linear barcode: GS1-128
- 2D barcodes: GS1-Data Matrix, GS1-QR Code



HIBC

The Health Supplier Labelling Standard is designed for the medical supplies industry. The standard supports both linear and 2D barcodes.





Requirements

Server

- Sage 300 2014 or above
- One Sage 300 Lanpak for connection, regardless of the number of Barcode users
- Windows Server 2012 or above with Internet Information Server (IIS) as the web server

Handheld devices

- Android 4.4 (KitKat) or above
- Windows CE 6.0 or Windows Mobile 6/0 or above, at least 2.8" touch screen with VGA, QVGA WVGA WQVGA resolutions
- iOS 10 or above
- Wi-Fi connection to the Barcode web server



Download for iOS



Download for Android

AutoSimply Company Limited

AutoSimply is founded by a group of former Sage 300 consultants, we know and understand fully what our customers really need. All our products are designed exclusively for Sage 300 and developed using 100% Sage 300 SDK.

Contact Us

Address: 5/F Goldsland Building 22-26 Minden Avenue, Tsimshatsui, Kowloon, Hong Kong

Telephone: +852 2366 8392

Fax: +852 3154 9177

E-mail: info@autosimply.com

Website: www.autosimply.com/